



**DESIGN OPTIONS** Select your trim style from the twelve styles illustrated below. Numbers indicate COLOR AREAS for MTO ORDER FORM.  
Additional charges apply with EURO style option,

<p><b>DESIGN A</b></p> <p>No additional charge AREA 1: Body AREA 2: 1" Trim / Sleeves</p>	<p><b>DESIGN B</b></p> <p>Add \$35.00 to suit "starting at" price AREA 1: Body AREA 2: Collar, Epaulets, Belt, Pockets</p>	<p><b>DESIGN C</b></p> <p>Add \$60.00 to suit "starting at" price AREA 1: Body AREA 2: 6" Band / Chest, Sleeves</p>	<p><b>DESIGN D</b></p> <p>Add \$55.00 to suit "starting at" price AREA 1: Body AREA 2: Collar, Epaulets, 6" Band / Chest</p>	<p><b>DESIGN E</b></p> <p>Add \$45.00 to suit "starting at" price AREA 1: Bottom, Collar, Epaulets AREA 2: Top</p>	<p><b>DESIGN F</b></p> <p>Add \$45.00 to suit "starting at" price AREA 1: Body AREA 2: 6" Band / Chest</p>
<p><b>DESIGN G</b></p> <p>Add \$55.00 to suit "starting at" price AREA 1: Bottom AREA 2: Top AREA 3: Sleeves</p>	<p><b>DESIGN H</b></p> <p>Add \$65.00 to suit "starting at" price AREA 1: Waist, Bottom, Sleeves AREA 2: Chest, Back</p>	<p><b>DESIGN I</b></p> <p>Add \$65.00 to suit "starting at" price AREA 1: Body AREA 2: Chevron / Chest Only</p>	<p><b>DESIGN J</b></p> <p>No additional charge AREA 1: Body</p>	<p><b>DESIGN K</b></p> <p>Add \$135.00 to suit "starting at" price AREA 1: Body AREA 2: 6" Band / Chest only Checkerboard-black &amp; white only</p>	<p><b>DESIGN L</b></p> <p>Add \$85.00 to suit "starting at" price AREA 1: Waist, Bottom, Sleeves AREA 2: 6" Band / Chest, Sleeves AREA 3: Chest, Back</p>

**SUIT COLORS** Colors shown below are for guidance only. Actual fabric colors may vary. Some fabric COLORS WILL FADE OR CHANGE — PLEASE CALL FOR INFORMATION BEFORE ORDERING. Indicate your fabric / color choices on MTO ORDER FORM.



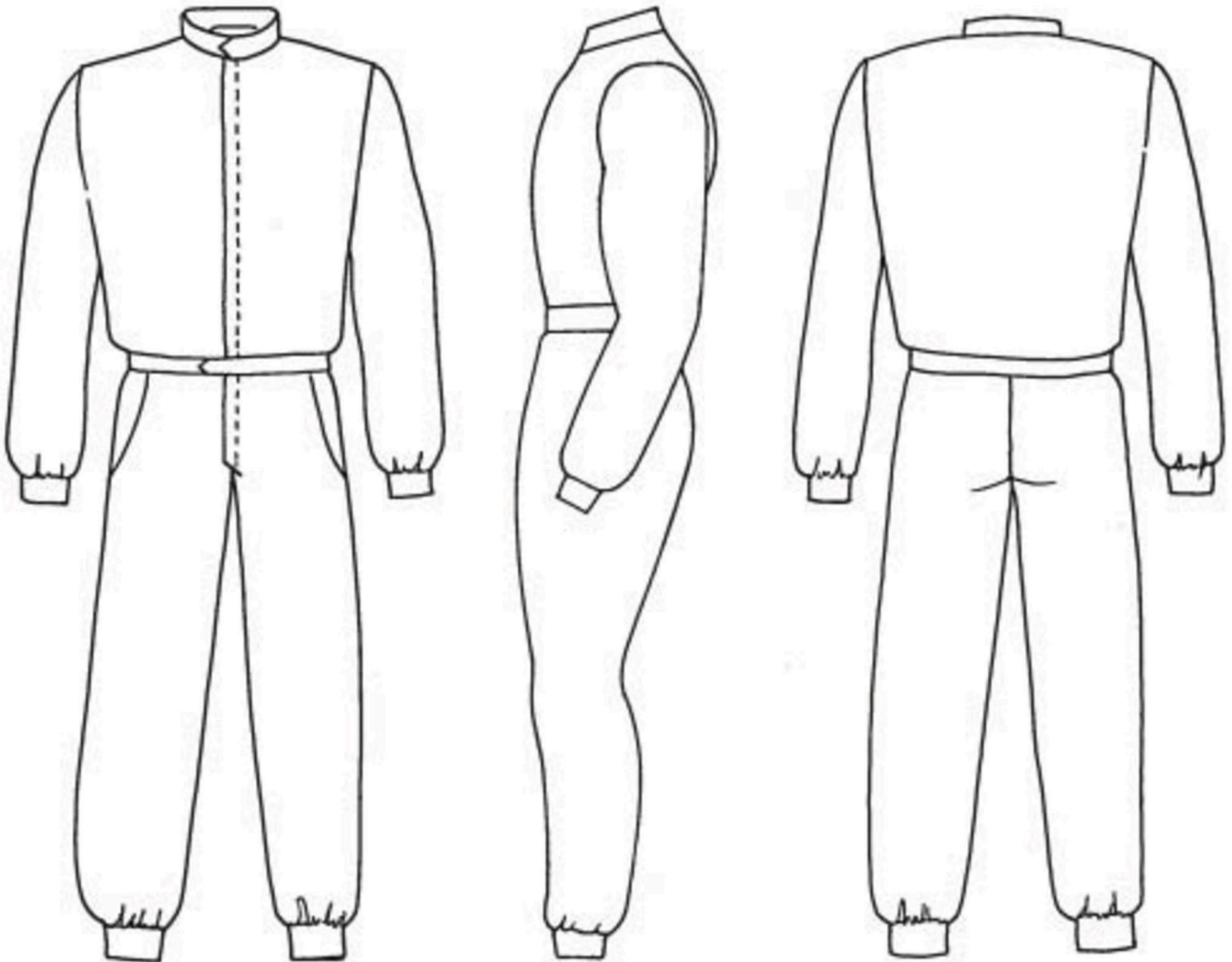
**SUIT OPTIONS** Select your suit options from the choices below. Indicate your choices on MTO ORDER FORM.

<p>Banded Collar (Without Speedfit Closure)</p>	<p>360° Gusset</p>	<p>Padded Epaulet</p>	<p>Zippered Breast Pocket</p>	<p>Name Embroidery (Script or Block)</p>	<p>Contrasting Thread</p>	<p>Straight Leg Cuff Colored Ribbed Cuff (Ankle &amp; Wrist)</p>
<p>Standard Collar (Nomex® III with Speedfit Closure)</p>	<p>Pant Side pockets (Patch or Inset)</p>	<p>Back Patch Pocket</p>	<p>Lower Back Expandable Gusset</p>	<p>Built-In Arm Restraint</p>		
<p>Soft Collar (Knit Nomex with Speedfit Closure)</p>						

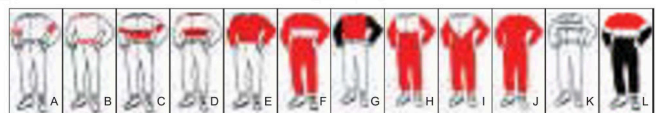


# CUSTOM STYLE • ORDER FORM

Use these drawings to design your own suit. To ensure accurate representation of your design, please show trim patterns, colors and wording clearly. We recommend photocopying this page for best results. Use either color pencils or fine tipped felt markers and call out exact color.



**DESIGN OPTIONS** Select your trim style from the twelve styles illustrated to the right.



**SUIT OPTIONS** Select your suit options from the choices below. Indicate your choices on MTO ORDER FORM.


1 pc.  
 2 pc.



**OUTLAW**  
**SPEED SHOP**

[www.outlawspeed.com.au](http://www.outlawspeed.com.au)

## Custom Order Release

Please be advised that in placing this order for custom manufactured merchandise you are accepting full responsibility for the correctness and accuracy of all pertinent ordering information.

Further, be advised that by filling out and signing this form you are affirming the correctness and accuracy of the information contained herein and authorizing Outlaw Speed Shop to order this

custom merchandise. Once this form has been signed, the purchaser assumes full responsibility for paying for the custom merchandise and no refund will be issued unless it can be shown that any errors or defects were the fault of the manufacturer and not caused by incorrect information.

As a rule, custom orders cannot be cancelled once the order is placed with the manufacturer.

All custom orders are subject to freight and handling charges from the manufacturer.

No returns will be accepted on custom-built items.

Customer Name \_\_\_\_\_

Address \_\_\_\_\_

City \_\_\_\_\_ State \_\_\_\_\_ Post Code \_\_\_\_\_

Phone \_\_\_\_\_

Fax \_\_\_\_\_

Email \_\_\_\_\_

Print Your Name \_\_\_\_\_ Date \_\_\_\_\_

Authorized Signature \_\_\_\_\_

**Outlaw Speed Shop**

**50 Grand Junction Rd, Rosewater, S.A, 5013**

**web: [www.outlawspeed.com.au](http://www.outlawspeed.com.au) | phone: 08 8240 9500 | fax: 08 8240 3619**